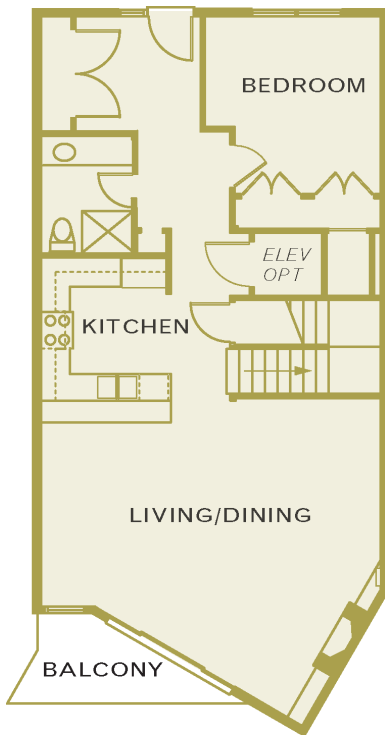


BARBERA  PENTHOUSE

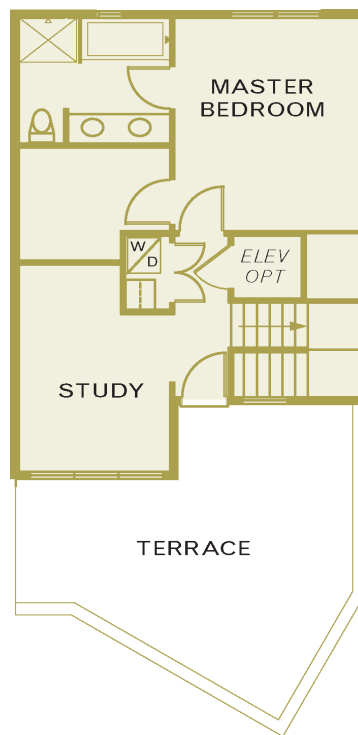


PENTHOUSE
B303
1,718 SQ FT
2BR/1.75 BA

- Ⓞ 9 foot ceilings
- Ⓞ Second floor vaulted ceilings
- Ⓞ Extensive upstairs master bedroom suite with study and terrace
- Ⓞ Floor to ceiling wood windows
- Ⓞ Large rooftop terrace with sunny southern exposure and propane hookup
- Ⓞ On-demand Rinnai hot water systems
- Ⓞ Built-in elevator shaft for optional two-level residential elevator
- Ⓞ Interior wood trim with wood doors
- Ⓞ Hi-velocity forced air heat/air conditioning
- Ⓞ Jatoba hardwood floors
- Ⓞ Propane fireplace with built-in shelves
- Ⓞ Caesarstone "Lagos Blue" quartz countertops in kitchen
- Ⓞ Stainless steel Energy Star appliances by GE Profile, including a dual-fuel range and an ultra-quiet Bosch dishwasher
- Ⓞ GE Profile Energy Star front-loading washer and dryer
- Ⓞ TOTO Aquia dual-flush toilets
- Ⓞ High-tech wiring
- Ⓞ Covered garage parking for one car
- Ⓞ Designed to accommodate a solar panel energy system



LEVEL 1



LEVEL 2



Tim Bailey
Satu Muldrow
206.780.7682



info@vineyardlane.com
www.vineyardlane.com

As we create this exceptional community, the Seller may change plans, features and prices without notice. All maps plans, and renderings are artists' conceptions and may not be accurate representations of the finished product.